

**Industry 4.0 and Smart Factory:**  
**Ensuring Workers Safety & Accelerating Operational Efficiency**

**FEATURES**

- Multiple Operating Modes: Motion Tracking, Geozone Detection etc.
- Geofencing Zone Detection
- Edge Computing for Proximity Detection and Exposure Assessment
- Predictive Maintenance Sensors
- ATEX Rated
- Water Proof Enclosure / Leak Detection / Metering
- Cloud Connectivity or On Premise
- Magnetic USB Connector for Rechargeable Battery/Replaceable AA Batteries
- Open API / Firmware Upgrade
- Connection to BMS or SCADA

**BENEFITS**

- Covid-19 Safe Return to Work - Occupancy Heat Maps & Contact Tracing
- Tag Wearer Proximity Notification with Centimetre Accuracy
- Indoor and Outdoor Asset & People Tracking
- Real-Time Workflow Control
- Material Flow Management
- Monitoring: Fire, Flood, Smoke, Air Quality and Temperature
- SOS Button
- Access Control & Density Policy Enforcement
- Real-Time Management of Hazards
- Anti-theft Detection & Danger Zones/Restricted Area Access Notifications
- Processing Times Monitoring and Product Authentication & more...



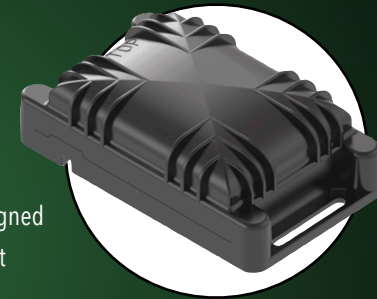
**SMART BADGE**

**Sleek, Smart and Multi-Functional.**

The smart badge is a portable multi-mode tracker in ID card format with embedded sensors, ideal for tracking, zone notification and monitoring of workplace safety and security.

**High Precision, Hardened Casing. Designed to Last.**

A highly versatile multi-mode tracker, with embedded sensors, designed to resist harsh surroundings enabling you to perform seamless asset tracking and management in any industrial environment!



**COMPACT TRACKER**

**Solid and Long Lasting, Built for Heavy Duty Tracking.**

Designed to resist harsh surroundings enabling you to perform seamless asset tracking and management in any industrial environment – whether it's for heavy-duty assets, inventory or livestock, taking advantage of its extraordinary battery autonomy.



**INDUSTRIAL TRACKER**

*Multiple Other Tag Options Available...*