



# Real-Time Locating Systems (RTLS)

## SMART BUILDINGS

RTLS Technology is a Smart Building Enabler Facilitating Applications such as:



### Safe Return to Work

- Occupancy Heat Maps
- Contact Tracing
- Virus Contamination Mitigation



### Booking

- Room
- Desk
- EV Charging



### Indoor & Outdoor Tracking

- Asset & People Tracking
- Mapping
- Wayfinding
- SOS Button



### Indoor Air Quality Monitoring



### Real Estate Optimisation & more..

Geofencing Zone Detection | Cloud Connectivity

Edge Computing for Proximity & Exposure Assessment | Water Proof Enclosure



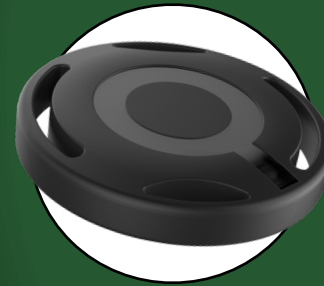
SMART BADGE

*Sleek, Smart and Multi-Functional.*

Portable multi-mode tracker in ID card format . Ideal for tracking, zone notification and monitoring of workplace safety and security.

*High Precision, Designed to Last.*

Highly versatile tracker, designed to be easily attached to a person or object. Lightweight, waterproof and shockproof, houses a 3-axis accelerometer, a programmable button and an LED.



COMPACT TRACKER



MICRO TRACKER

*Light, Handy, Yet Powerful.*

With its small size and long battery life, the micro tracker is the ideal product for numerous tracking applications: **asset and people tracking.**

*Multiple Other Tag Options Available....*